

**The MagicTouch<sup>®</sup>**

# Quick Reference Manual **2012**



# INDEX

Transfer Paper Selection Guide & Tips.

TTC - Textile Light Transfer

CPM - Hard Surface/Non textile Transfer

WoW - Free Form Transfer

OBM - Textile Dark Transfer

MagiCut- *123FLEX*

MagiCut- Paper

MagiCut- Premium Flex

MagiCut- Premium Flock

MagiCut- FX Range

MagiCut- Fashion

MagiCut- Nylon Flex

Cutting Guide

DCT - Water release decal paper

Tattoo Transfer

CL Media

Coverseal

Sublimation

# Transfer Paper Selection Guide & Tips.

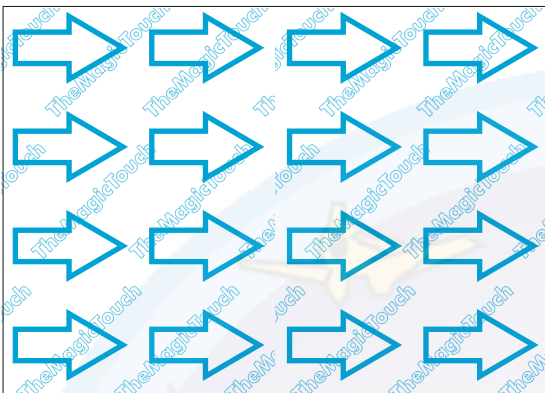
So, which paper do I need?

First select your desired applications and the paper type required.  
Now select the correct format and size of paper for your  
Colour Laser Printer/Copier..

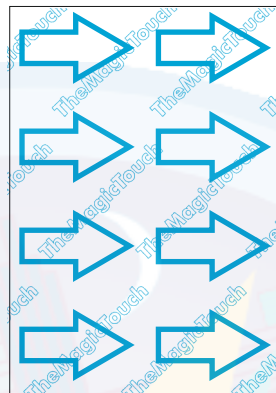
Note: A3 printers and copiers feed A4 on the long edge , whilst  
A4 printers have a short edge feed (A4R).



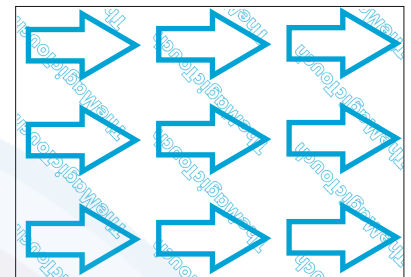
## A3



## A4 (long edge feed)



## A4R (short edge feed)



Note: Check prior to use which 'side up' the transfer paper must be fed in your printer/copier model. Wrongly fed paper can cause damage to the fuser unit.

Tip: Store transfer paper in a dry place, using the humidity bag supplied. Exposure to high humidity levels, may force the paper to curl and will cause feeding/jamming problems.

Tip: Single sheet feed through the manual bypass is recommended.

Tip: Keep all trays and feed systems on the printer/copier clean and dust free.

Tip: Always use converted formats only. Never cut A3 paper to be used in A4 machines.

# TTC - Textile Light Transfer

Note: TTC is the Product 3.3/3.1/3.5 are copier or printer dependant



95 Base



110 Base



130 Base

## Application Instruction

Copy in mirror image on coated side.

Pre-press fabric application for approx 5 seconds to remove any possible moisture.

Set pressure to maximum



Product	TEMP (C)	TIME(secs)	PEEL
Apron/ Bottle Apron	180°	10	Warm
Calendar Banners	180°	10	Warm
Caps & Visors	180°	10	Warm
Children's Bib	180°	10	Warm
Conference Mat	180°	10	Warm
Hand Made Paper	180°	12	Hot
Jigsaw(Linen)	180°	10	Warm
Traditional Mousemat	180°	10	Warm
Sun Screen	180°	10	Warm
T- Shirts	180°	10	Warm
Tea Towel/Towel	180°	10	Warm
Umbrellas	180°	10	Warm
Wristwrest	180°	10	Warm
CoolStuff	150°	5	Warm
FlipFlops	150°	5	Warm

# CPM - Hard Surface/Non textile Transfer

Note: CPM is the Product 6.3/6.4/6.1/6.2/6.5 are copier or printer dependant



## Application Instruction

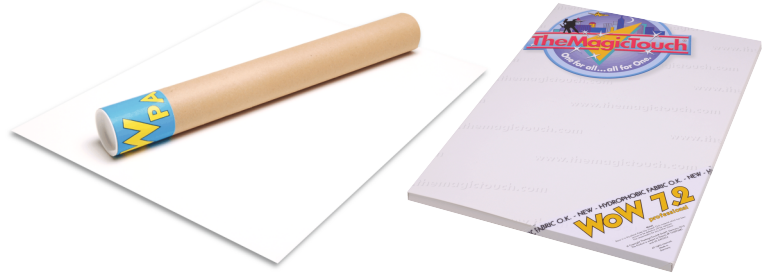
Copy mirror image on coated side.  
Set pressure to maximum



Product	TEMP (C)	TIME(secs)	PEEL	A-Pad
Coasters (medite)	170°	120*	Warm	Yes
CD/Digital Clock	170°	120*	Warm	Yes
<b>Coated Mugs*</b>	160°	90	Cold	No
Display Board	170°	5	Warm	No
Leather Products	140°	45	Warm	SoftPad
Leaflet Disp	170°	5	Warm	No
Magnetic Rubber	170°	120*	Warm	Yes
Metal	170°	120*	Warm	Yes
Placemats (medite)	170°	120*	Warm	Yes
Table Flags	170°	10	Hot	No
Umbrellas	170°	10	Hot	No
Wooden Jigsaws (medite)	140°	6	Warm	No
Unibinders	160°	25	Warm	Coverseal Sponge
SmartBox	150°	45	Warm	SoftPad
Meeting Books	150°	60	Warm	Coverseal Sponge
Composite Board	170°	180	Warm	Yes

\* 120 is equal to 2 minutes not 1 minute 20 seconds  
\* Please refer to your Mug Press Manual

# WoW - Free Form Transfer



## Application Instruction

1. Set HeatPress to 127°C and maximum Pressure. Use Temperature Test Strips to verify your Heat Press's actual Surface Temperature.
2. Print Mask as black&white negative mirrored on 100 gsm Colour Laser Paper to avoid shrinkage of the mask and mismatch of mSheet to iSheet.
3. Place WoWPad on Heat Press with smooth side up and pre-press when you start cold. **Note: Good retained Temperature at the first Step is important for a good final result!** Place mSheet coated side up on WoWPad and Mask on top. Cover with Release Paper and press for 10 seconds. Open press and strip Mask Paper off the mSheet immediately and in one smooth move without stopping. **Note: Do not remove Release Paper before you strip the Mask, it will retain the heat whilst peeling.**
4. Remove mSheet and WoWPad off the HeatPress. Place Release Paper on Heat Press and iSheet printed side up on top. Place and align mSheet on top to match the Image(s) with the masked white Film areas. Cover with WoWPad smooth side up and press for 30 to 40 seconds (depending on the thickness of your WoWPad). Open Heat Press, remove WoWPad and take the m&iSheet stack of the Press. Wait until the stack is really cold and strip mSheet backing paper including the outer border of the white film off the iSheet. **Tip: Holding the stack against glass or metal surface cools it down faster!**
5. Place Garment on the Heat Press and position iSheet with final transfer face down on top. Press for 5 seconds, for finer details and/or coarser weave up to 10 seconds. Open Heat Press and let Transfer go cold. Gently separate the backing paper from the iSheet.

**Note: If you encounter any grey colour Coating Residue or white spots outside the Image area you can remove it with regular office tape.**

Finally, cover with Release Paper and press again for 15 seconds. Let cool down for a few seconds and remove Release Paper.

# OBM - Textile Dark Transfer



## Application Instruction

Copy image on coated side, without mirror image.

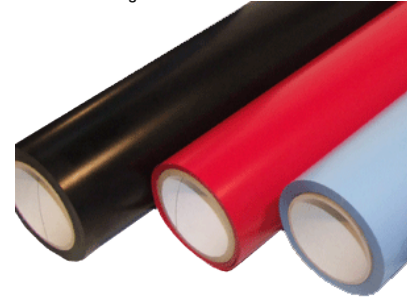
Pre-press fabric application for 35 seconds position OBM transfer face up onto a HOT garment. Cover with release paper or application tape.

Set pressure to medium

Product	TEMP (C)	TIME(secs)	PEEL	SoftPad
Baseball Caps	140°	15	Cold	No
100% Cotton T- shirts	140°	15	Cold	No
Cotton Twill	140°	15	Cold	No
Denim	140°	15	Cold	No
Hi Viz Vests	140°	15	Cold	No
Polyester Shirts	140°	15	Cold	No
Poly-Cotton Garments	140°	15	Cold	No
PU Coated Nylons	140°	15	Cold	No
Sweatshirts	140°	15	Cold	No
100% Cotton T- shirts	180°	30	Cold	Yes
Poly-Cotton Garments	180°	30	Cold	Yes
Sweatshirts	180°	30	Cold	Yes

# MagiCut-123FLEX™

20 Colours available  
Including 5 neons



## Application Instruction

Cut in mirror image  
Do Not Pre Press  
Set pressure to medium

Product	TEMP (C)	TIME(secs)	PEEL
Baseball Caps	160°	3	Hot
100% Cotton T- shirts	160°	3	Hot
Cotton Twill	160°	3	Hot
Denim	160°	3	Hot
Hi Viz Vests	160°	3	Hot
Polyester Shirts	160°	3	Hot
Poly-Cotton Garments	160°	3	Hot
Sweatshirts	160°	3	Hot



# MagiCut- Paper

17 Colours available  
Including Glow in the Dark



## Application Instruction

Cut in mirror image ink side up

Pre-press fabric application for approx 5 seconds to remove any possible moisture.

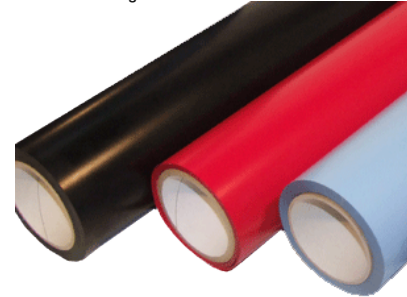
Set pressure to medium

Product	TEMP (C)	TIME(secs)	PEEL
Baseball Caps	180°	10	Cold
100% Cotton T- shirts	180°	10	Cold
Cotton Twill	180°	10	Cold
Denim	180°	10	Cold
Hi Viz Vests	150°	10	Cold
Polyester Shirts	150°	10	Cold
Poly-Cotton Garments	180°	10	Cold
Sweatshirts	180°	10	Cold

\*No need to pre- press. Protect edges of bag with softpad or piece of fabric

# MagiCut- Premium Flex

41 Colours available  
Including Glow in the Dark



## Application Instruction

Cut in mirror image matt side up

Pre-press fabric application for approx 5 seconds to remove any possible moisture.

Set pressure to medium

Product	TEMP (C)	TIME(secs)	PEEL
Baseball Caps	165°	20	Cold
100% Cotton T- shirts	165°	20	Cold
Cotton Twill	165°	20	Cold
Denim	165°	20	Cold
Hi Viz Vests	155°	20	Cold
Polyester Shirts	155°	20	Cold
Poly-Cotton Garments	165°	20	Cold
Sweatshirts	165°	20	Cold

\*No need to pre- press. Protect edges of bag with softpad or piece of fabric

# MagiCut- Premium Flock

19 Colours available



## Cutting Guide (new blade)

Graphtec	Force	17
New Star/DGI	Force	75
Roland	Force	75

## Application Instruction

Cut in mirror image matt side up

Pre-press fabric application for approx 5 seconds to remove moisture.

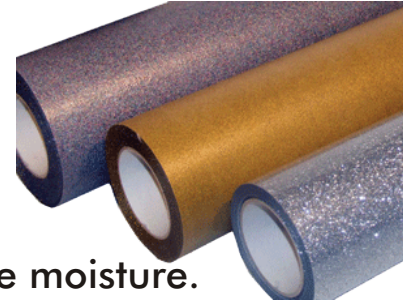
Set pressure to medium

Product	TEMP (C)	TIME(secs)	PEEL
Baseball Caps	170°	20	Warm
100% Cotton T- shirts	170°	20	Warm
Cotton Twill	170°	20	Warm
Denim	170°	20	Warm
Hi Viz Vests	155°	20	Warm
Polyester Shirts	155°	20	Warm
Poly-Cotton Garments	170°	20	Warm
Sweatshirts	170°	20	Warm

\*No need to pre- press. Protect edges of bag with softpad or piece of fabric

# MagiCut- FX Range

32 Colours available



## Application Instruction

Cut in mirror image matt side up

Pre-press fabric application for approx 5 seconds to remove moisture.

For best results press for 10 seconds allow to cool peel off backing film place teflon sheet on garment and press again for a further 15 seconds.

Set pressure to medium

## Brilliant/Starflex/Pearl

Product	TEMP (C)	TIME(secs)	PEEL
100% Cotton	160°	18	Cold
Cotton/Polyester mix	160°	18	Cold
Polyester/Acrylic mix	160°	18	Cold
Hi Viz Vests	150°	15	Cold
Polyester Shirts	150°	15	Cold

## Glitter/Paint/Reflective

Product	TEMP (C)	TIME(secs)	PEEL
100% Cotton	165°	20	Cold
Cotton/Polyester mix	165°	20	Cold
Polyester/Acrylic mix	165°	20	Cold
Hi Viz Vests	155°	17	Cold
Polyester Shirts	155°	17	Cold

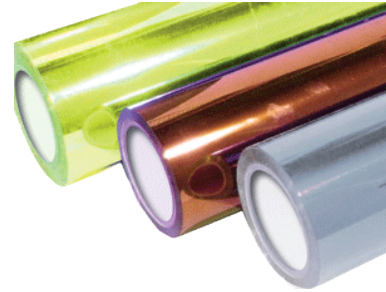
# MagiCut- Fashion

## Cutting Guide (new blade)

Graphtec Force 25

New Star Force 150

32 Colours available



## Application Instruction

Cut in mirror image matt side up

Pre-press fabric application for approx 5 seconds to remove moisture.

Set pressure to medium

Product	TEMP (C)	TIME(secs)	PEEL
Baseball Caps	165°	20	Cold
100% Cotton T- shirts	165°	20	Cold
Cotton Twill	165°	20	Cold
Denim	165°	20	Cold
Hi Viz Vests	155°	20	Cold
Polyester Shirts	155°	20	Cold
Poly-Cotton Garments	155°	20	Cold
PU Coated Nylons	155°	20	Cold
Sweatshirts	165°	20	Cold

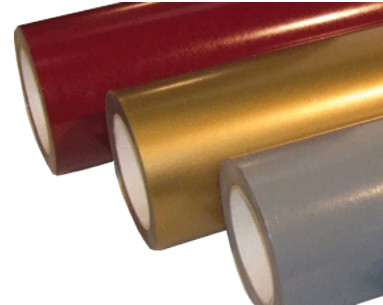
# MagiCut- Nylon Flex

## Cutting Guide (new blade)

Graphtec Force 25

New Star Force 150

15 Colours available



## Application Instruction

Cut in mirror image matt side up

Pre-press fabric application for approx 5 seconds to remove moisture.

Set pressure to Low

Product	TEMP (C)	TIME(secs)	PEEL
Hi Viz Vests	150°	45	Warm
Polyester Shirts	150°	45	Warm
Poly-Cotton Garments	150°	45	Warm
PU Coated Nylons	150°	45	Warm



# Cutting Guide

Note: guide only with a new blade we would always recommend a test cut.

	Cut Pressure				Cutting Speed
	Cameo	720	Graphtec	Roland	
123 Flex	4	90gm	13	80gm	Fast
Magicut Paper	3	50gm	9	40gm	Fast
PremiumFlex	4	90gm	13	80gm	Fast
PremiumFlock	7	120gm	16	110gm	Medium
FX Paint/Glitter	5	80gm	14	75gm	Fast
FX Starflex/Pearl	8	140gm	22	130gm	Fast
FX Brilliant/Reflex	7	120gm	20	110gm	Slow
Fashion	4	90gm	13	80gm	Fast
NylonFlex	4	70gm	12	60gm	Medium
OBM5.6	3	45gm	8	35gm	Fast
Soldark	4	50gm	10	45gm	Fast
Sub-Block	4	90gm	13	80gm	Fast
DCT 4.5	3	50gm	9	40gm	Fast
CLMedia	4	70gm	12	60gm	Medium

## Blade Guide

Silhouette Cameo integrated blade and holder



MagiCut 720 - Economy Blade



Graphtec Style Blade



# DCT - Water release decal paper



Opaque

Clear

## Application Instruction

Copy image on coated side, without mirror image.

Trim transfer to final shape or size.

Clean surface of product free of dust, grease or oil.

Place decal in cold water for approximately 1 minute, and then slide onto product removing the backing paper.

Remove all remaining air bubbles or wrinkles using a rubber squeegee.

Leave product to set and dry for a least 3 hours.

Increase long term durability by baking in a normal oven at 180° for approximately 5 minutes.

Please do your own test with your own oven.

**Do not place into a dishwasher or clean with a scourer in hot water.**





# Tattoo Transfer



## Application Instruction

1. Print the design onto Tattoo transfer paper (non logo side) in mirror image on selected Colour Laser/LED printer/copier.  
(fill the sheet with as many images as possible)
2. Peel the backing away from the adhesive sheet and position adhesive face up on table.
3. Place printed Tattoo transfer paper face down onto adhesive, press firmly and remove any air or creases.
4. Cut out designs as required with scissors or more precisely with the MagiCut process.
5. Peel away clear film.
6. Position transfer on skin or nails.
7. Cover with wet cloth for approx 20 seconds and press firmly.
8. Remove cloth and slide away transfer, wipe away excess water/moisture.

### Note:

The Tattoo Transfer when used with adhesive sheet is suitable for application onto fingernails.

# CL Media



Clear Gloss (SPF 10)

Clear Matt (SPF 12)

White Gloss (SPF 20)

White Matt (SPF 22)

Gold Gloss (SPF 30)

Silver Gloss (SPF 40)

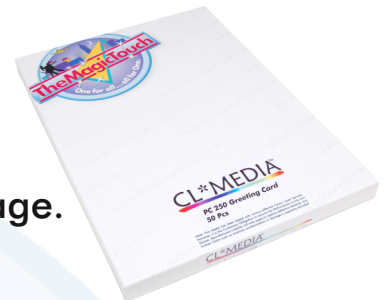
## Application Instruction

Copy image onto coated side, without mirror image.  
Peel from backing and apply to substrate.

Note: Clear products may require mirror image depending on where they are being placed.

## Greeting Card (SPF50)

Copy image onto either or both sides, without mirror image.



## Exterior Vinyl (SEN12)

Copy image onto coated side, without mirror image.  
Peel from backing and apply to substrate.



## Clear Cling Adhesive Film (SEN16)

Copy image onto coated side, with mirror image.  
Peel from backing and apply to substrate.



Note: Clear products may require mirror image depending on where they are being placed.

# Coverseal

## Application Instruction

Peel the Coverseal from its backing carrier and place on the cold substrate. Place the substrate on the bed of the heat press. Cover with the sponge provided. Press at 180° for 10 - 15 seconds. Trim off excess Coverseal.



Note: Place on the substrate do not rub it on.

Note: Different Times and temps will give different effects on different substrates

Product	TEMP (C)	TIME(secs)	
Coasters (medite)	140°	15	Gloss Finish
Coasters (medite)	180°	15	Matt Finish
Magnetic Rubber	180°	15	
Medite Products	140°	15	Gloss Finish
Medite Products	180°	15	Matt Finish
Metal	180°	15	
Mousemats	180°	15	
Placemats (medite)	140°	6	Gloss Finish
Placemats (medite)	180°	6	Matt Finish

# Sublimation



## Application Instruction

Because you can sublimate onto a variety of surfaces , you will need to take all variables of the surface into account when selecting time , temperature and pressure. Such variables are-: Thickness of the substrate, Surface texture Surface size, Surface colour (shade of white), Substrate conductivity  
Print your images approx 5-10mm larger than the size of the substrate you are transferring to. This allows a margin of error when aligning everything under the heat press.

Product	TEMP (C)	TIME(secs)	PEEL
Polyester T -Shirt	190°	50	Hot
Polyester/Cotton mix	190°	50	Hot
Orca Coated Mug	190°	140	Hot (Studio Mug Press)*
Coated Metal (face down)	190°	50	Hot
Coolstuff	180°	50	Hot
FlipFlops	160°	50	Hot
Placemats (medite)	190°	60	Hot
Coasters (medite)	190°	60	Hot
Bar Runners	190°	60	Hot
Mousemats	190°	60	Hot
iCustom Case (face down)	180°	80	Hot
SubliCase	155°	300	Hot Silicon Heat Pad
Aluminium Water Bottle	190°	140	Hot (Studio Mug Press)*

\*Please check settings for your mug press

The Magic Touch

Car One

